



FXM-HP RUGGED UPS MODULE DATALOG SETUP



an EnerSys® company

FXM HP UPS EDUCATION SERIES



DATALOG SETUP

The FXM-HP UPS module has many pre-configured logs and allows the user to setup their own Datalogs. Most of the logs are available through LCD or Web browser. The logs hold up to 3000 of the most recent events, 300 of which are viewable by web browser and 25 by LCD. Logs can be exported for further analysis.

Events				
Export Events to CSV				
Search		Aa	"abc"	
Time	Source	Name	Value	Actions
12/10/2019 12:33:32 PM	Web User	Logon	admin	
12/10/2019 12:06:36 PM	WebSession	Session ended (Navigation Timeout)	10.0.0.22	
12/10/2019 11:06:27 AM	Web User	Logon	admin	
12/10/2019 11:03:56 AM	WebSession	Session ended (Over Maximum Time Limit)	10.0.0.22	
12/10/2019 10:49:32 AM	FXM-HP 120V-48V/854	AC Power Outage	Inactive	
12/10/2019 10:49:32 AM	FXM-HP 120V-48V/854	AC Input Breaker Open	Inactive	
12/10/2019 10:49:32 AM	FXM-HP 120V-48V/854	On Battery	Inactive	
12/10/2019 10:49:30 AM	FXM-HP 120V-48V/854	System Mode	Line	
12/10/2019 10:49:25 AM	FXM-HP 120V-48V/854	AC Input	On	
12/10/2019 10:49:26 AM	FXM-HP 120V-48V/854	System Mode	Retransfer	

« 1 2 3 4 5 6 7 8 9 » Total Rows 300 Page 1/30

The Events log includes; BBS System Mode, AC Power Outage, Configuration Changes, Battery Mode, Dry Contact Relay Status, User Logon, Firmware Updates, Web Sessions and more.

EVENTS LOG

The Event log table keeps a record of changes to the state of the system to help with troubleshooting.

The types of state changes that are logged include:

- Alarm states
- Configuration changes
- Battery Mode changes (for example, discharging)

MODULE ALERTS LOG

The Modules Alerts log table tracks what is happening on individual modules without interfering with Alarms or the Event log.

Module Alerts				
Export Module Alerts to CSV				
Search		Aa	"abc"	
Time	Source	Name	Value	Actions
12/10/2019 10:49:25 AM	FXM ADIO	AC Input Breaker Open	Inactive	
12/10/2019 10:49:15 AM	FXM ADIO	AC Input Breaker Open	Active	
12/10/2019 7:52:25 AM	FXM ADIO	CAN Communication Status	Normal	
12/9/2019 2:12:51 PM	FXM ADIO	Firmware Upgrade Status	Upgrade Successful	
12/9/2019 2:12:51 PM	FXM ADIO	CAN Communication Status	Normal	
12/9/2019 2:12:49 PM	FXM ADIO	CAN Communication Status	---	
12/9/2019 2:11:42 PM	FXM ADIO	CAN Communication Status	Loading Software	
12/9/2019 1:33:23 PM	FXM ADIO	CAN Communication Status	Normal	
12/9/2019 1:28:57 PM	FXM ADIO	CAN Communication Status	Normal	
12/9/2019 12:50:30 PM	FXM ADIO	CAN Communication Status	Normal	

Total Rows: 300
Page: 1/30

BATTERY LOG

The Battery log shows the parameters of charge and discharge cycles. Because of the large quantity of information that can be collected for battery charges and discharges, a complete dataset can only be obtained by exporting the log.

Battery Activity										
Export Battery Log to CSV										
Search		Aa	"abc"							
Battery Identifier	Battery Activity	Start Time	Duration (h)	Battery Capacity (A-h)	Amp-Hours Delivered (A-h)	Change in SOC (%)	Starting SOH (%)	Change in SOH (%)	Battery Current - Avg (A)	Activity Results
Battery 48V/70B	Charge	12/9/2019 7:13:00 PM	0.00	0.0	0.0	---	---	---	0.0	Normal



POWER OUTAGE LOG

The Power Outage log is the best place to see the history of the outages the site has been protected against. It shows the time/date of an outage and its duration. Power Outage Log will log all outage events, the user defined minimum power outage duration is used to suppress the Power Outage Alarm to filter out noise generated by short interruptions that lasts only few seconds or minutes.

Power Outage Logs				
Export power outage log to CSV				
Search	Aa	"abc"		
System Identifier	Start Time	End Time	Duration	Actions
FXM-HP 120V-48V/854	12/10/2019 10:49:14 AM	12/10/2019 10:49:25 AM	00:00:11	
FXM-HP 120V-48V/854	12/9/2019 8:28:11 AM	12/9/2019 8:28:58 AM	00:00:46	

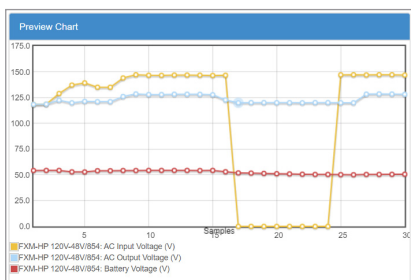
Datalogs			
Add Datalog			
Name	Status	Sample Count	Actions
Datalog/319	Idle	0	Remove Add Data Signal

DATALOGS

Datalogs allow the user to record data signals from the FXM HP UPS at set intervals over a period. Up to 10 datalogs with a maximum of 20 data signals each can be created via webpage only. Each model can capture and store up to 3600 samples.

To add a new datalog click the "Add Datalog" button and then the action button. Click the "Add Data Signal" to identify the sources you wish to monitor. Now use the "Field" action arrow of the Data Signals table to setup the source of the signal.

Example shows how to select the “AC Input Voltage.”



Once you have added all your data sources, click “Start Capture” in the Status table. It will then capture data per your sampling interval and the sample count. A Preview Chart will appear, which will graph the data. Then select “Stop Capture” to end. You can also setup a trigger signal or a logic statement to initiate the capture.

To view all 3600 data samples, the datalog must be exported to a CSV file and viewed with a 3rd party program such as Microsoft Excel.



PERFORMANCE LOGS

The FXM-HP UPS module comes with preset performance logs which are constantly capturing data. Clicking the actions arrow will take you to that specific log. Logs can be exported all at once or individually. Charts are then shown in seconds, minutes, hours and days. It holds up to one-years' worth of daily roll-ups with a minimum, maximum and average value for key usage statistics.

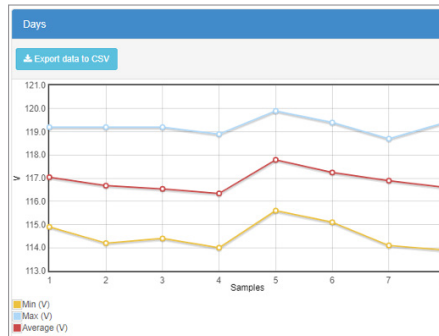
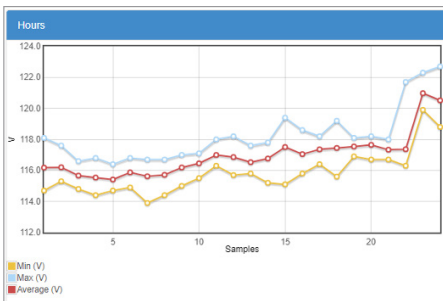
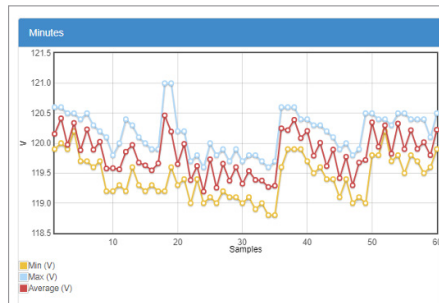
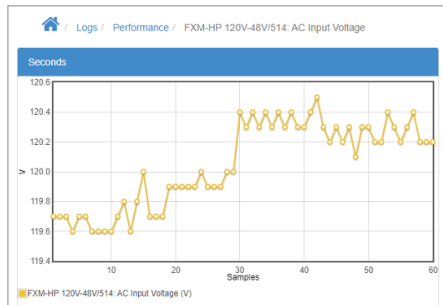
Home / Logs / Performance

Performance Logs

Export All

Name	Actions
Controller: Application Memory In Use	[Export]
Controller: CPU Usage	[Export]
FXM-HP 120V-48V/854: AC Output Voltage	[Export]
FXM-HP 120V-48V/854: Battery Voltage	[Export]
FXM-HP 120V-48V/854: AC Output Current	[Export]
FXM-HP 120V-48V/854: AC Output Apparent Power	[Export]
FXM-HP 120V-48V/854: AC Input Voltage	[Export]
FXM-HP 120V-48V/854: Battery Current	[Export]

FXM-HP 120V-48V/514: AC Input Voltage" (V)			
Time	Average	Min	Max
12/3/2019 23:59	117.0403	114.9	119.2
12/4/2019 23:59	116.6754	114.2	119.2
12/5/2019 23:59	116.5378	114.4	119.2
12/6/2019 23:59	116.3389	114	118.9
12/7/2019 23:59	117.7894	115.6	119.9
12/8/2019 23:59	117.2425	115.1	119.4
12/9/2019 23:59	116.8918	114.1	118.7
12/10/2019 23:59	116.6008	113.9	119.4





For assistance, contact Alpha Technical Support:

Toll Free North America: 1.888.462.7487

International: +1.604.436.5547

Monday - Friday, 7:00 AM - 5:00 PM PST for regular inquiries

24/7 for emergency support

[Click here to report a problem](#)



an EnerSys® company

Alpha Technologies Services, Inc. USA: 3767 Alpha Way, Bellingham, WA 98226 Canada: 7700 Riverfront Gate, Burnaby, BC V5J 5M4
Toll Free North America: +1 800 322 5742 Outside US: +1 360 647 2360 Technical Support: +1 800 863 3364
For more information visit www.alpha.com

© 2020 Alpha Technologies Services, Inc. All Rights Reserved. Trademarks and logos are the property of Alpha Technologies Services, Inc. and its affiliates unless otherwise noted. Subject to revisions without prior notice. E. & O.E.

110/2020
#0480054-00 Rev A